



# Reusable Asset Management

## An RFID-Enabled Solution to Track Your Reusable Assets

### Reusable Asset Management Difficulties

There are a variety of obstacles that keep your company from getting the details needed to manage a reusable asset fleet:

- Inappropriate and/or unreliable tracking
- Manual processes and errors
- Labor and time shortages

These issues can cause many problems for supply chains dependent upon reusable assets. Delayed orders, inaccurate shipments, lost containers and increased cycle times cause companies to spend money for additional assets and labor without actually fixing the problems at their core.

Removing these obstacles is the key component to getting the visibility and information needed to efficiently manage your reusable assets.

### Fluensee's Solution: AssetTrack for Reusable Assets

Fluensee's RFID-enabled AssetTrack solution can simplify your returnable asset management process by optimizing and automating it, which gives you the visibility, control and information to more closely manage your reusable assets.

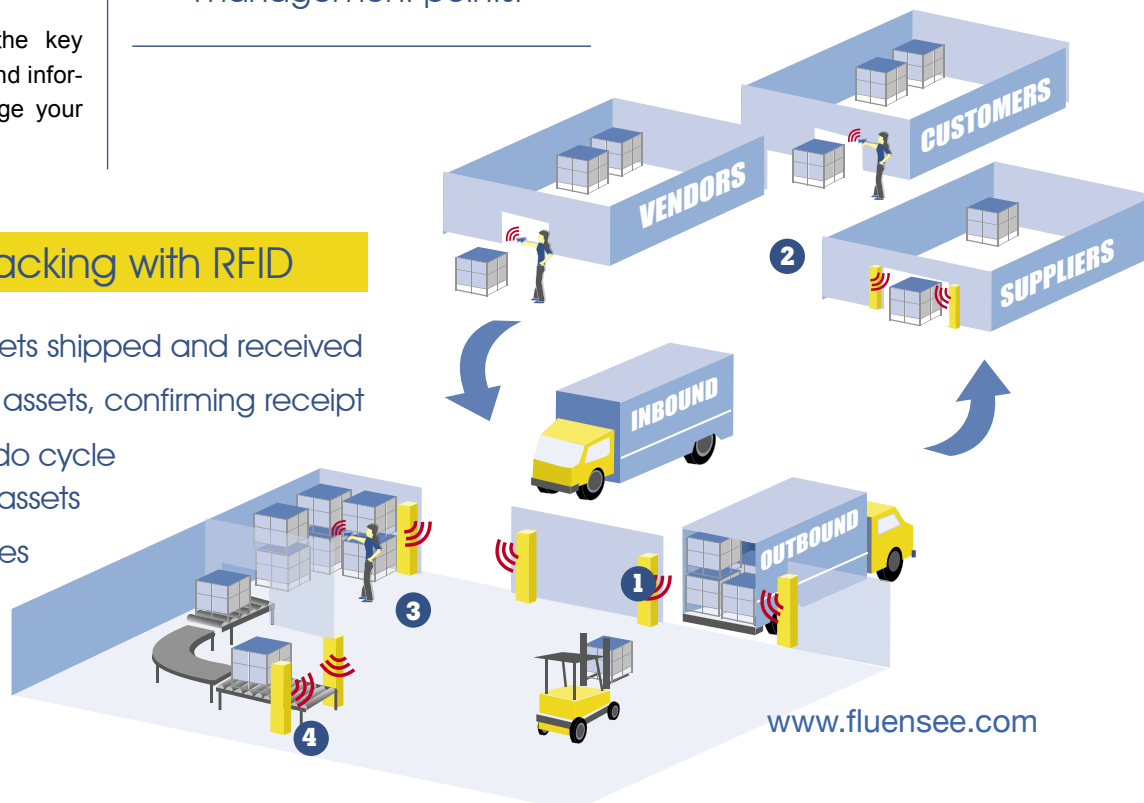
Fluensee's end-to-end solution has already been proven in a variety of industries. Current users highlight the following features:

- Uses RFID to automate shipping and receiving, inventory and more
- Reports valuable asset data like location, maintenance data, and asset history
- Allows user-configuration for field entries, workflows, and exception alerts
- Reduces costs associated with additional asset purchases, labor and human error

Fluensee implements RFID at key tracking and management points.

### Reusable Asset Tracking with RFID

- 1 Automatically track assets shipped and received
- 2 Recipients can scan in assets, confirming receipt
- 3 Quickly take inventory, do cycle counts, or find specific assets
- 4 Monitor critical processes or movements within the facility



## AssetTrack Features

- Automated shipping and receiving
- Asset location tracking within or outside of your facility
- Configurable workflows and exception alerts
- Customizable fields and entries
- Detailed, accurate reports on inventory, location, status, and more
- Web-based – deploys to multiple locations
- Integrates to existing applications (ERP, WMS, service desk, etc.)

## AssetTrack Benefits

- Reduces human error
- Notifies of inaccurate moves or improper procedures
- Alerts for suboptimal shipping conditions
- Provides quicker, more accurate inventories and asset searches
- Reduces labor time and costs
- Assigns asset accountability to customers/vendors
- Helps prevent asset hoarding
- Reduces additional asset investments
- Manages procedures such as cleaning, loading, and maintenance

## Contact Us

### Fluensee, Inc.

383 Inverness Parkway, Suite 240  
Englewood, CO 80112  
Tel: (303) 799-0700  
[www.fluensee.com](http://www.fluensee.com)

## Know When, Where, Who and How Many

### AssetTrack uses an RFID infrastructure

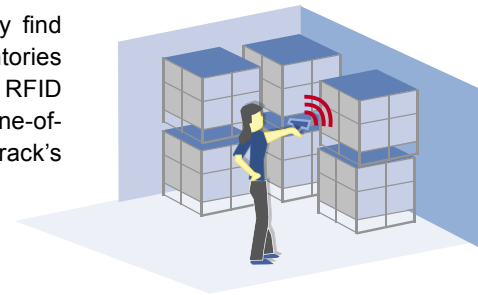
coupled with existing business processes and applications to give you real-time, accurate information on how many returnable assets you have, where they are, and how long they've been at their existing location, helping to make sure that your supply will always match your demand.



## Reduce Time and Labor Locating Assets

### Fluensee's RFID-enabled solution automates asset location tracking

giving you the visibility needed to quickly find and manage your items. Physical inventories can be done in a fraction of the time using RFID technology, which doesn't need close, line-of-sight scans to read asset data. AssetTrack's location data can narrow down searches to a building, floor, or even room.



## Improve Asset Turn Times and Lifespan

### AssetTrack's reports can show who has your assets and when they're due back

helping you to reduce cycle times and get more from your existing asset pool. AssetTrack's workflow and alerting functions help manage your repair and maintenance schedules, alerting you of due dates/times or even missed steps, which can significantly improve lifespan.

