



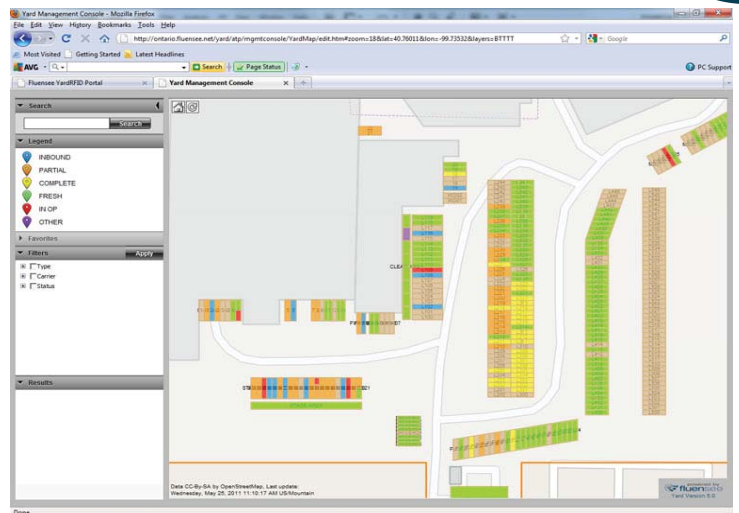
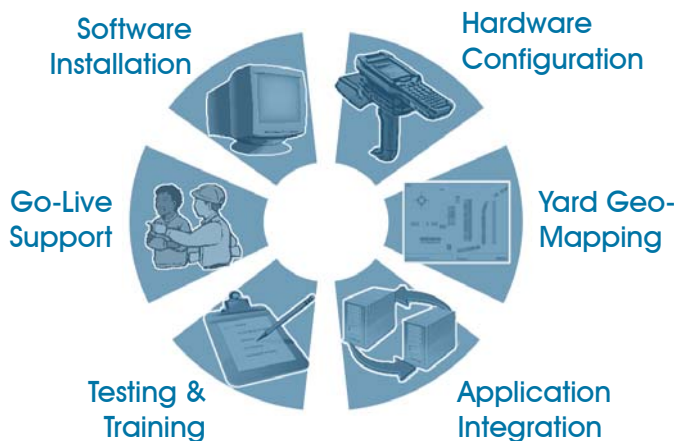
# Fluensee Yard™

## RFID-Enabled, Real-Time Yard Management Solution

### Fluensee Yard™ Real-Time Visibility & Control

Fluensee's Yard™ solution marries RFID and GPS technologies with the most advanced business rules and processes to automate workflow and events across yard operations. This merging of technologies, coupled with Fluensee's web-based software, offers real-time locating and management of yard assets and operations at a cost that can achieve an ROI in 12 months or less. System benefits include:

- Real-time visibility and locating capability that monitors all yard assets and their status
- Automatic identification of equipment entering and exiting the gate, and throughout the yard
- Communication between the yard server, yard jockey, guard shack and all other yard components and users
- Complete implementation services for all elements of the yard management solution including:



### Quick, Easy, Accurate, Organized

How have customers using real-time yard management received an ROI in as little as 6 months?

RFID + GPS Technology + Fluensee Yard Software =

- ◆ Faster gate processing, which gets trailers to the dock quicker and moves goods more efficiently
- ◆ Exact trailer locations, which eliminates timely yard searches for specific trailers or trailer types
- ◆ Automatic yard inventories performed by yard jockeys during their regular yard movements
- ◆ Reduced time & labor whether inputting trailer data, looking for trailer information, monitoring carrier schedules or other arduous tasks
- ◆ Eliminate human error when processing trailers, moving trailers, etc.



## Technology Enabled

Nothing compliments a state-of-the-art solution better than state-of-the-art hardware. Fluensee partners with best-of-breed hardware manufacturers for dependable auto-ID readers and tags that are known throughout



the industry for their rugged construction for field environments like those that exist in many yards. They offer power and performance in a compact, durable construction that not only allows Fluensee to provide customers with a reliable, proven solution, but also at a cost-effective price.

## More Technology

- GPS-enabled, real-time graphic map of all yard assets
- Automatic gate processing, security and arm control
- Temperature-sensing technology for reefers
- Automatic, passive RFID drive-by inventories
- Handheld software available for data access anywhere

## More Flexibility

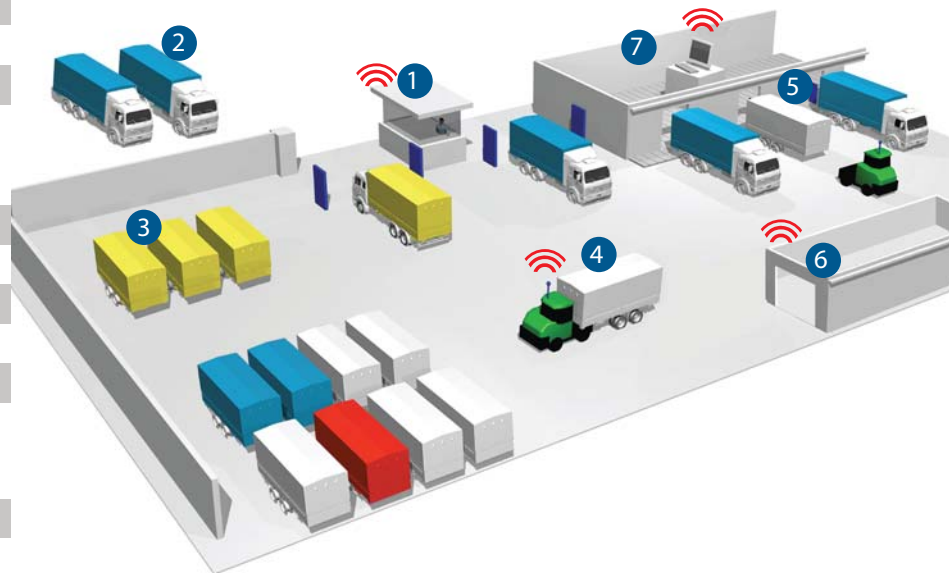
- Shared, web-based access for all client locations
- Client-hosted or Cloud software solution
- Integration into WMS, TMS or other solutions
- Modular solutions available to provide specific value
- User-configurable elements like alerts, reports, etc.

## More Value

- Reduced trailer bottlenecks and detention charges
- Carrier-scheduled appointment management
- Productivity reports for jockeys and other processes
- Complete load assignment for trailers
- More efficient yard plans and effective operations
- Better visibility and utilization of dock doors
- Instant sharing of all yard information

## Modular Yard Management

- 1 Gate House:** Provides carrier scheduling and trailer processing tools allowing users to modify trailer information, assign location and update trailer inventory in real-time.
- 2 Carrier Scheduling:** Tracks appointment times allowing both you and carriers to view and monitor performance.
- 3 Shipping & Logistics:** Gives dispatchers/traffickers visibility of trailers and equipment, allowing them to assign tasks to drivers, and monitor trailer moves and dock door usage.
- 4 Yard Jockey:** Provides real-time communication/task assignment to yard jockeys throughout the yard, and monitors their location and performance.
- 5 Dock Doors:** Offers visibility to trailers at each dock door, as well as providing tools to track door productivity. Integrates with dock door systems for seamless load management.
- 6 Maintenance / Wash Bays:** Automatically tracks equipment to/from various bays to help optimize bay processes and maintain accurate historical records for equipment.
- 7 Yard Visibility:** Shares comprehensive, real-time information and reports between users throughout the company, as well as carriers and other parties, for complete yard visibility through an easily-deployed, web-based application.



## Contact Us

Fluensee, Inc.  
9233 Park Meadows Dr.  
Lone Tree, CO 80124

Tel: (303) 799-0700  
info@fluensee.com  
www.fluensee.com